

IN THIS DAY PATIENT UNIT FOR CHILDREN, BILLARD LEECE PARTNERSHIP LET MEDICINE FADE INTO THE BACKGROUND AND SHOW THAT NOT EVERYTHING ABOUT HOSPITAL IS SCARY.

photography  
DIANNA SNAPE

*THE* <sup>02</sup>  
*ROYAL*  
*CHILDREN'S*  
*HOSPITAL*  
*AMBULATORY UNIT*





- × **project**  
The Royal Children's Hospital  
Ambulatory Care Unit  
50 Flemington Road  
Parkville VIC 3052  
T 03 9345 5522  
W www.rch.org.au
- × **design practice**  
Billard Leece Partnership  
180 Flinders Street  
Melbourne Victoria 3000  
T 03 9656 5000  
W www.blp.com.au
- × **project team**  
Associate Director/Health  
Planner: Mark Mitchell  
Senior Health Planner: Mary Allen  
Senior Project Architect:  
Chantelle Chiron  
Project Team: Eddie Law, Dianne  
Greenwood, Eleanor Fenton
- × **interior design**  
Tonya Hinde Interior Design
- × **project managers**  
Atkinson Project Management
- × **services engineers**  
Lincolne Scott
- × **structural engineers**  
Connell Mott McDonald
- × **quantity surveyor**  
WT Partnership
- × **builder**  
Kane Constructions
- × **time frame**  
Design and documentation:  
6 months  
Construction:  
10 months

- × **products**
- walls**  
Dulux "Berkshire White," "Glowing  
Coats," "Golden Sand," "Chesty  
Bond" and "Nappa Valley" paint.  
Tarkett Sommer wall guard.  
Johnson Waringa tiles
- windows**  
Capral 400 Series window frames.  
Mermet E Screen sheer roller  
blinds. Luxaflex between glass  
venetian blinds
- flooring**  
Tarkett Sommer Eminent  
"Cream" and "Black" vinyl. Forbo  
Surestep. Interface Polestar  
"Comet" carpet
- lighting**  
Billard Leece custom skylights.  
Albert Smith Group Fibrelume  
"Starfields" optic fibre feature  
lighting. Austube strip lighting.  
Ism Objects Drum lamp and  
Bud pendant
- furniture**  
Magis Trioli and Puppy chairs  
supplied by ECC Lighting and  
Living. Profile 3 and 4 seater  
waiting chairs, Stag straightback  
chair and Round Table supplied  
by Turnco. Custom-designed  
curved benches supplied by GAAS  
furniture. Joinery used Laminex  
"Curly Birch" and "Parchment."  
Duropl Multiplex edge
- fabrics**  
Woven Image "Cosmopolitan".  
Austex Pellan in "Tipi Red"  
and "Tandoori"

× **design statement**  
The brief was for an Ambulatory Care Unit for visiting day patients, as part of the Interim Works at the Royal Children's Hospital. This refurbishment of the old kitchen space amalgamated three existing departments – Day Medical Unit, Renal Dialysis and Immunisation. While the project provided the opportunity to create a big, fun space for kids to come together, the challenge was to ensure that the kids could still easily be monitored and that different age groups were catered for within this shared space.

Despite the need for visible hospital equipment, it was important that the space had the appearance of being "for kids." The main design feature of this project is the large treatment/therapy room. Built devices such as the "UFO" observation desk, brightly coloured ceiling dots, fibre-optic lighting features and bright clusters of

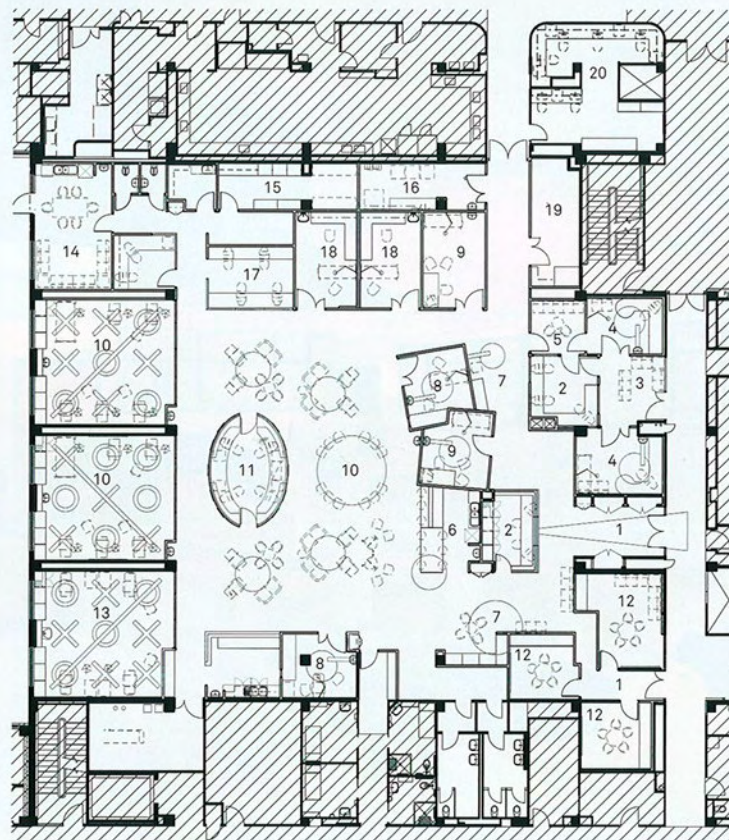
furniture all help to distract kids (and their parents) from the scariness of a hospital experience. With these new bright built elements made larger than life, the monitoring equipment and treatment trolleys visually shrink away into the background.

Because it's a day medical unit, we needed to bring a sense of daylight into an enclosed space. This was achieved not only with lighting techniques, such as continuous strip lighting around the perimeter of the space combined with random square "skylight-style" light fittings, but also through using light finishes.

While we wanted the space to feel colourful, we didn't want the colour to saturate and darken the space. So essentially the walls, floors and ceilings are white and primary colour is used to highlight certain elements, such as weigh stations, reception points and clinical rooms.

Billard Leece Partnership

- 1 / DESPITE THE HOSPITAL EQUIPMENT, THE SPACE HAS THE APPEARANCE OF BEING "FOR KIDS."
- 2 / OVERSIZED GRAPHICS AND CLUSTERS OF COLOURFUL FURNITURE LEND A SENSE OF FUN.
- 3 / CONTINUOUS STRIP LIGHTING AROUND THE PERIMETER OF THE SPACE BRINGS A FEELING OF DAYLIGHT TO THE ENCLOSED SPACE.
- 4 / THE "UFO" OBSERVATION DESK AND BRIGHTLY COLOURED BULKHEADS DISTRACT CHILDREN AND THEIR PARENTS FROM THE SCARINESS OF A HOSPITAL EXPERIENCE.



- 1 Entry
- 2 Reception
- 3 Waiting
- 4 Immunisation bay
- 5 Exit bay
- 6 Pantry
- 7 Waiting / baby weigh
- 8 Quiet room
- 9 Consulting room
- 10 Therapy
- 11 Nurses observation bay
- 12 Diabetes consult
- 13 Renal dialysis
- 14 Staff room
- 15 Clean utility
- 16 Dirty utility
- 17 Administration
- 18 Treatment
- 19 Store
- 20 Workstations

GROUND LEVEL 1:500

